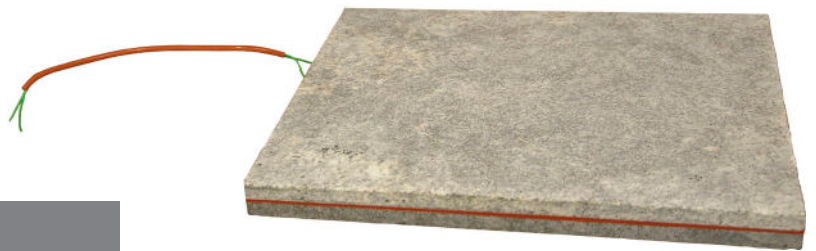


### Description

We offer different types of materials for our Stone Heater namely lava, soap stone and granite. No matter which material you choose, this element delivers a high inertia and even distribution of heat. The, so called, sandwich element can either be inserted in the radiator or mounted with fixations. Regardless of the way it is fixated, this element is always class 2. The Stone Heater is highly appreciated for the soft heat it conveys.



### Technical specification

Material	Lava Soap stone Granite
Standard dimensions	300 x 314 x 32      800W
	300 x 393 x 32      1000W
	300 x 630 x 32      1500W
	300 x 788 x 32      2000W
	Other dimensions on request
Fixing device	Insert or special fixation
Connection	Cables, with or without tab terminals
Design	A variety of stone materials on request
Power	On request
Voltage	230 V or others on request
Safety	The element meets requirements acc. to EN 60335-1 Class 2 design on element.



**CLASS 2**

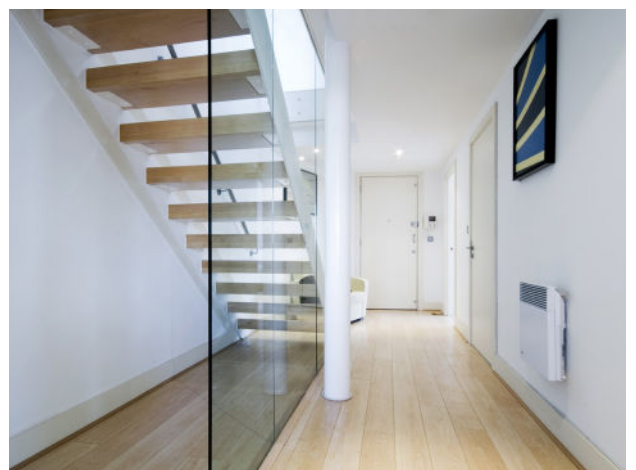
### Tubular heating element

#### BENEFITS

- Accumulated effect / high inertia
- Even heat distribution
- Soft heat
- No risk of leakage

#### FIELDS OF APPLICATION

- Dry radiators



Towel dryer