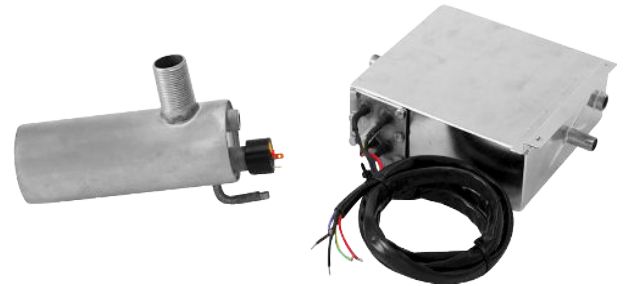


Description

Steam generator with 1 running element and 2 or 3 elements for quick steam generation.

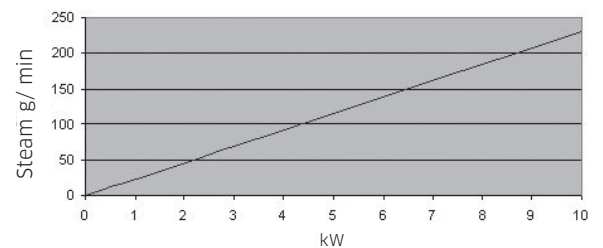
This product can be used for a vast variety of appliances like inhalators, steam cleaning equipment, showers and steam saunas. The generators can be fitted with level switch, pressure switch and/or thermostat etc. to make a complete product.



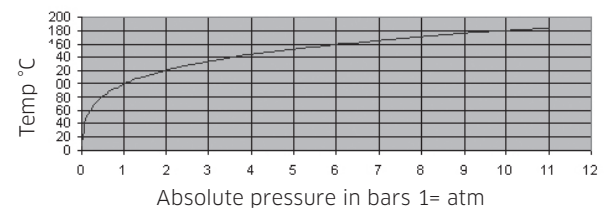
Technical specification

Material	Boiler in stainless AISI 304/EN 1.4301 Heating elements AISI 316L/EN 1.4404
Dimension	acc. to customer spec.
Effect	acc. to customer spec. (see diagram)
Voltage	Max 480 V
Pressure	Normally running 1 Bar (pressure can be higher, max 6 Bar depending on design)
Temp.	100°C supplied with thermal cut-off. BTC 130°C (+10-0°C)
Surf. load	1 kW = 15.3 W/cm ² 2,4 kW = 15.4 W/cm ²
Options	Thermosats, temperature sensors, pressure switch, thermal cut-off, level sensor, descaling system, cable harness, connection box, thermal insulation, drainage valve, pump (Ulca) etc.
Safety	The elements meet requirements acc. to EN 60335-1
Pre heating of water	1 kW operating element, 4 minutes to full steam capacity

Steam Capacity



Steam Temperature / Connected to Pressure



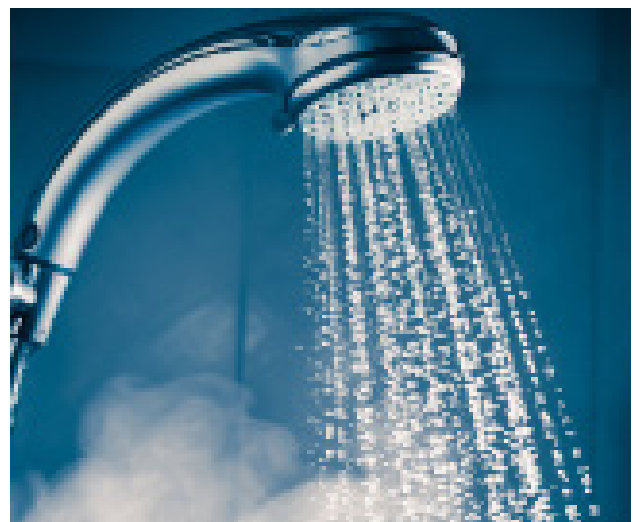
Tubular Elements

BENEFITS

- Quick steam generating
- Complete unit ready for installation
- Corrosion resistant

FIELDS OF APPLICATION

- Steam shower cabins
- Sterilisers
- Cleaning equipment
- Inhalators
- Saunas
- Desinfectors



Steam shower cabin